



# BOQUETE TOWN CENTER

CONDO RESIDENCES & SHOPS  
BOQUETE, REPUBLIC OF PANAMA



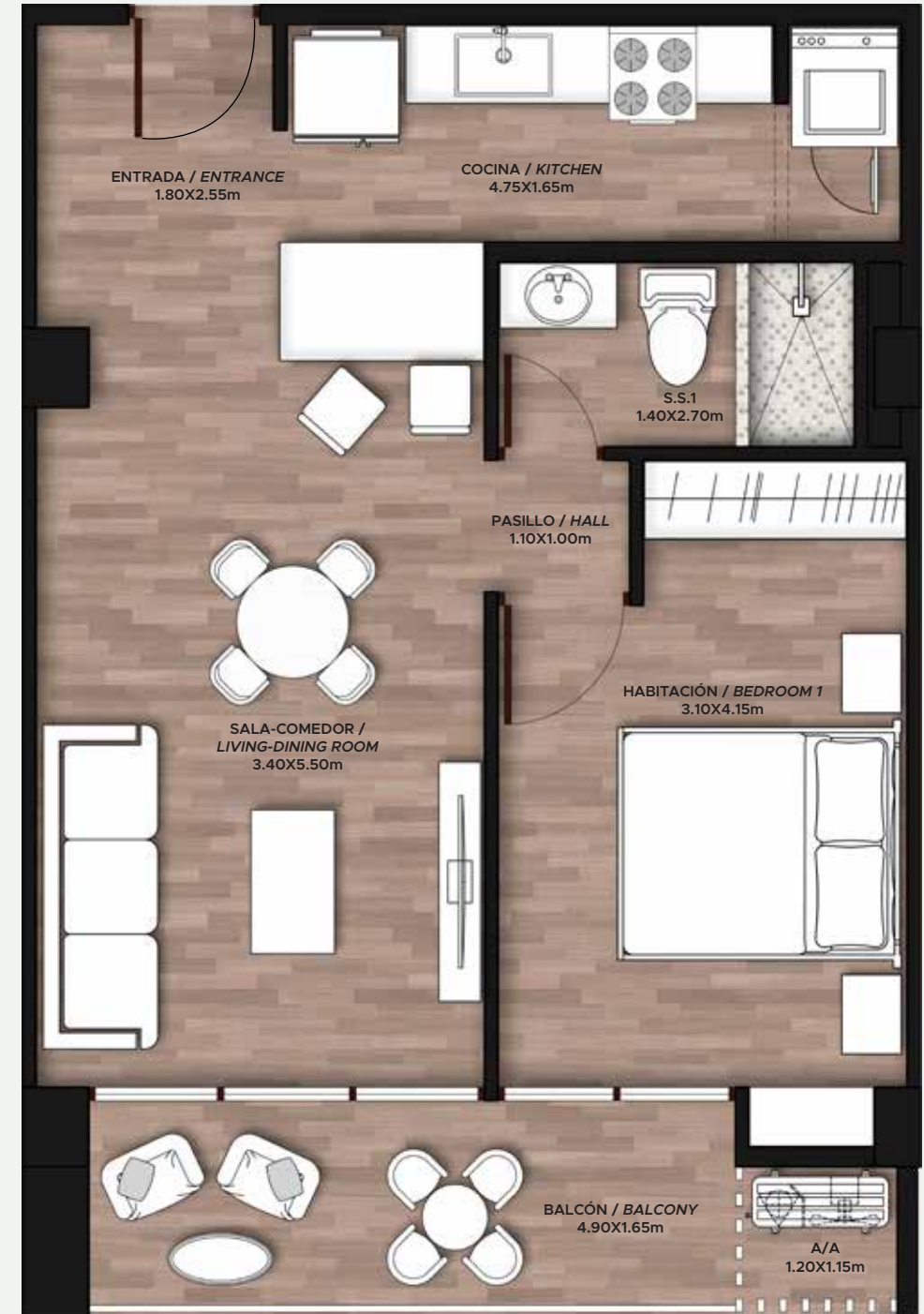
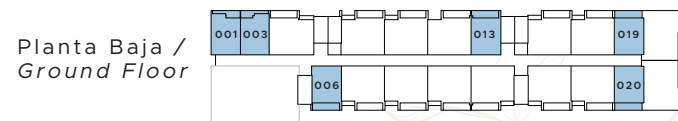
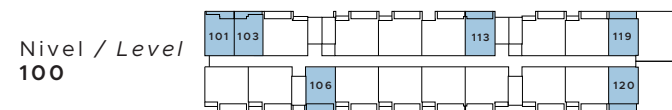
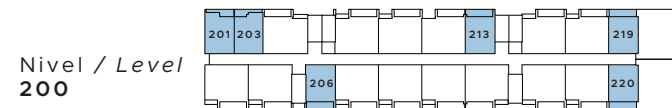
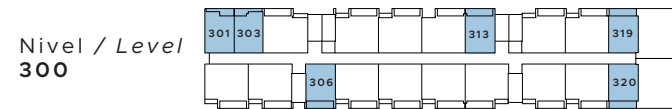
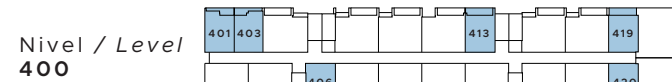
EDPANAMA.COM | +507 396.5000 | 6983.5882

Modelo / Model A

# Trek

- 1 Habitación / Bedroom
- 1 Baño / Bathroom
- Cocina / Kitchen
- Sala-Comedor / Living-Dining room
- Balcón / Balcony

66m<sup>2</sup> / 710.41ft<sup>2</sup>



Modelo / Model B

# Barú

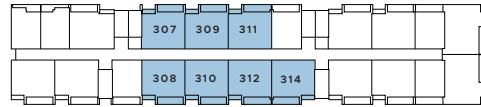
- 2 Habitaciones / Bedrooms
- 2 Baños / Bathrooms
- Cocina / Kitchen
- Sala-Comedor / Living-Dining room
- Balcón / Balcony

 96m<sup>2</sup> / 1033.43ft<sup>2</sup>

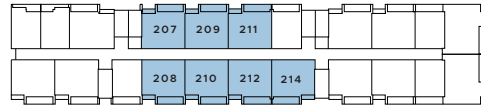
Nivel / Level  
400



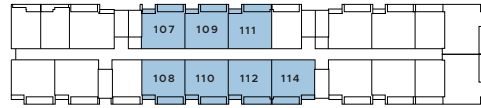
Nivel / Level  
300



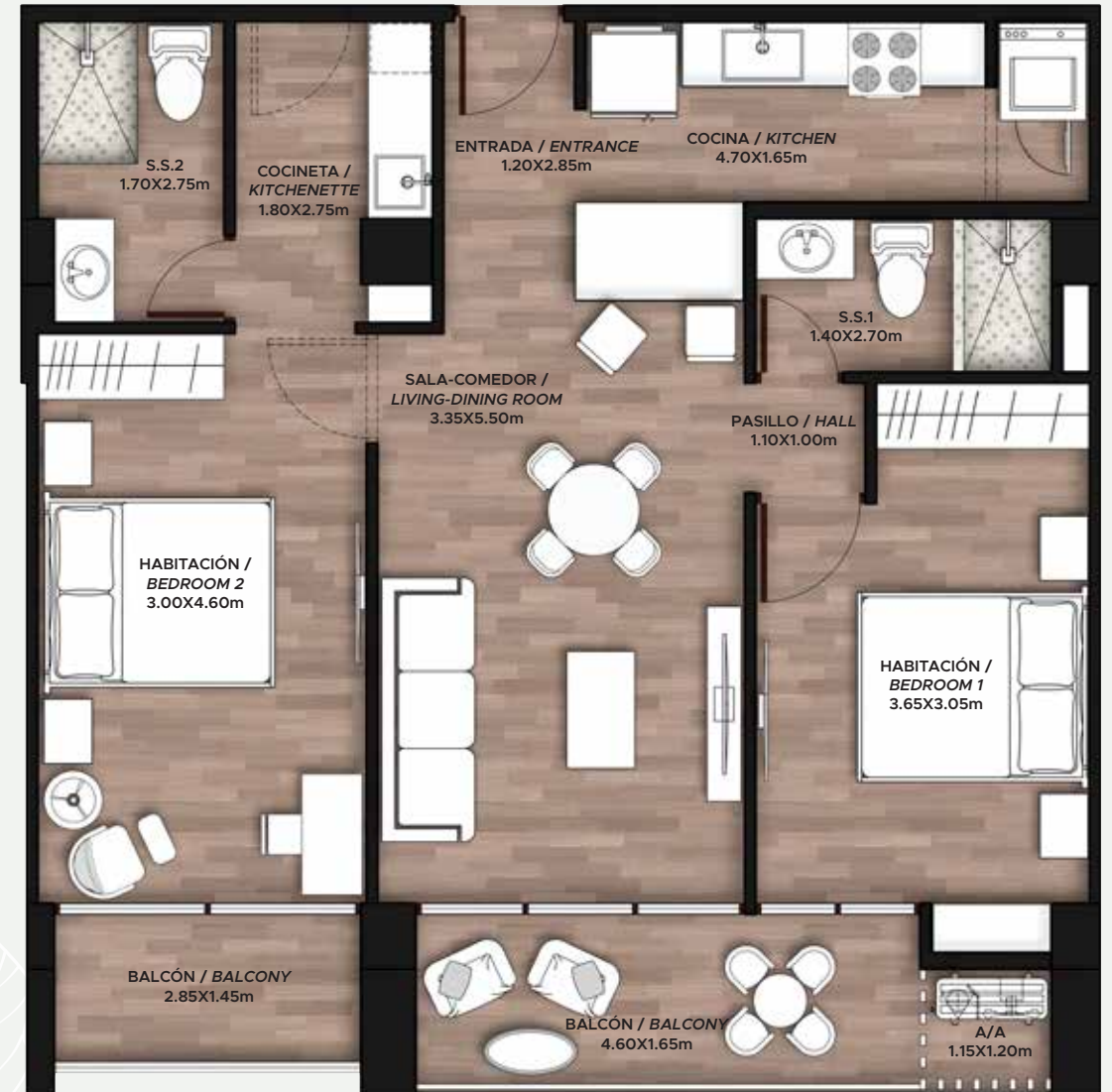
Nivel / Level  
200



Nivel / Level  
100



Planta Baja /  
Ground Floor

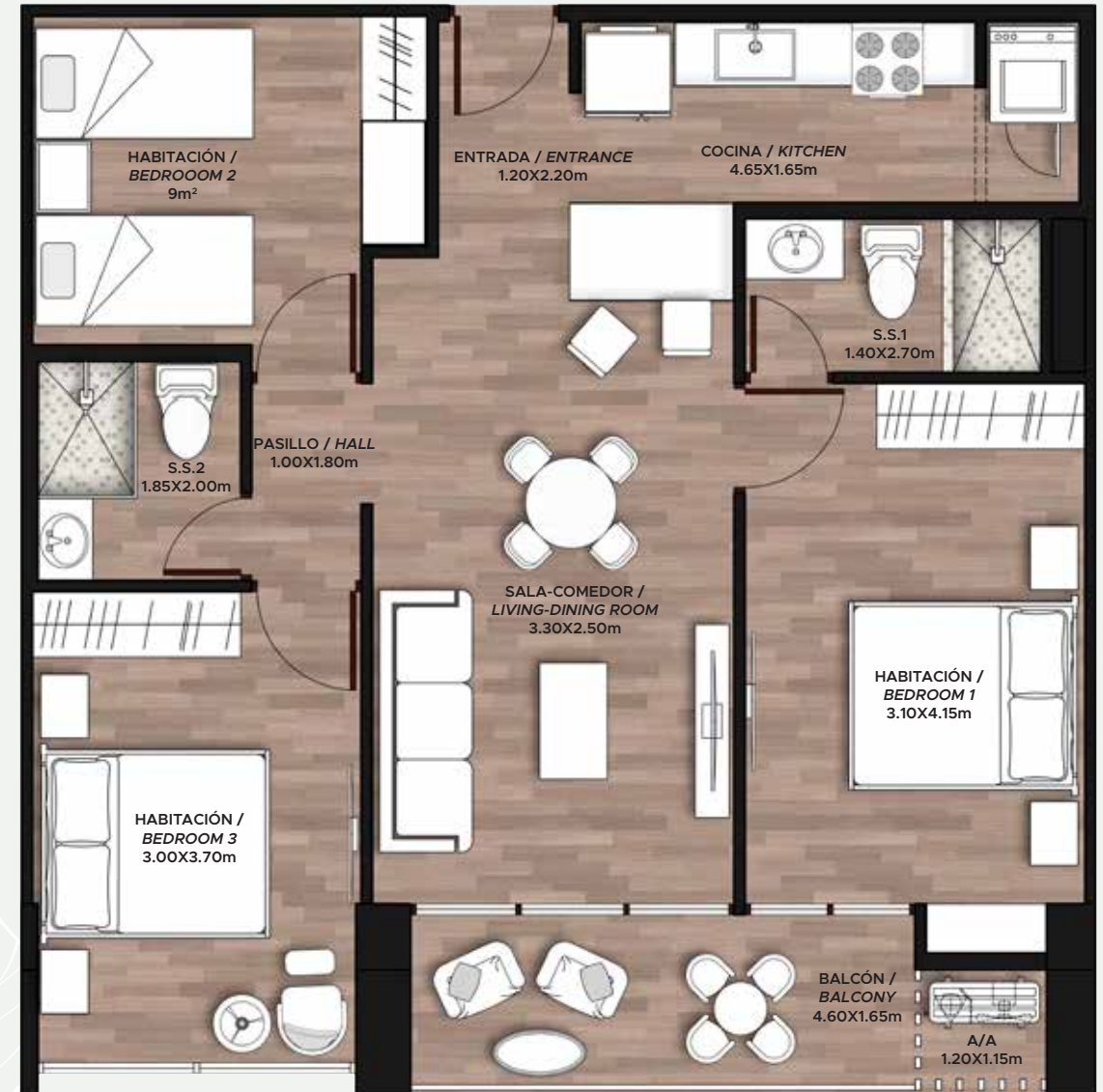
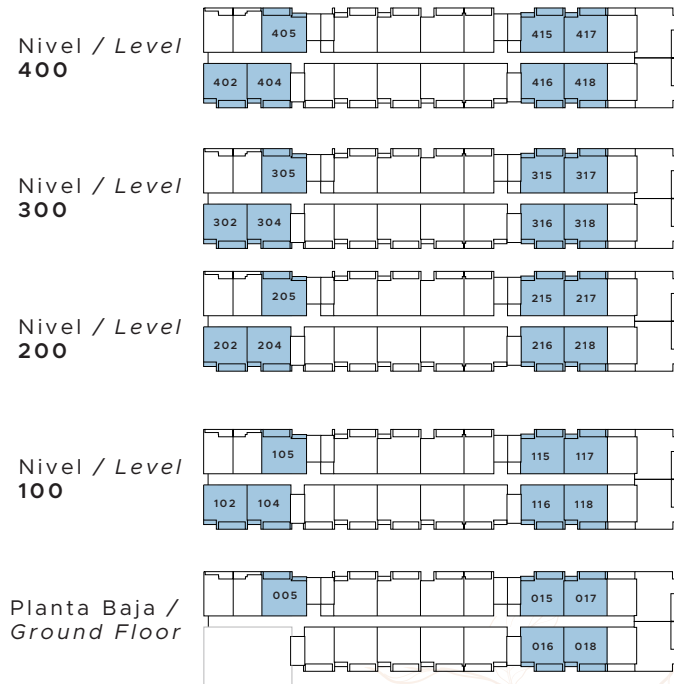


# Caldera

Modelo / Model C

- 3 Habitaciones / Bedrooms
- 2 Baños / Bathrooms
- Cocina / Kitchen
- Sala-Comedor / Living-Dining room
- Balcón / Balcony

96m<sup>2</sup> / 1033.43ft<sup>2</sup>



TownCenter Residences

Pristine

Luster

Palatial



**EMPORIUM**  
DEVELOPERS

**Sala de Ventas / Sales Office:** +507 788.1714  
Boquete, Chiriquí. +507 6876.3552  
**Oficina Principal / Main Office:** +507 396.5000  
Ciudad de Panamá, Panamá. +507 6983.5882

